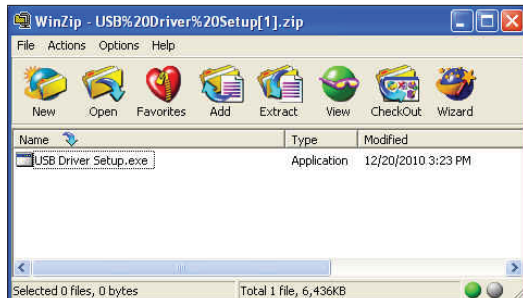
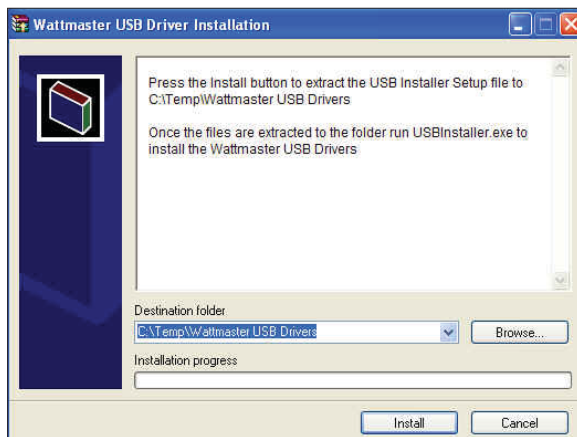

 USB Driver Installation

1. Insert the USB Drivers CD-ROM into your CD-ROM drive or *download* the USB Drivers file from any of our websites. If using the CD-ROM, go to Step 4. If downloading the file, you will need to *click* on the USB Driver Setup.zip file to unzip the file.

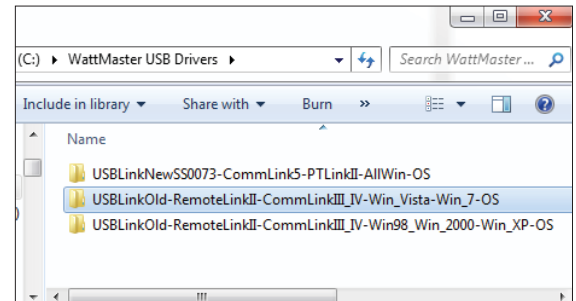


2. Once you unzip the file, the *WattMaster USB Driver Installation Window* will appear.

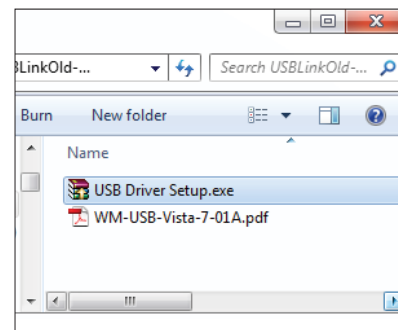


3. If you wish to change the Destination Folder, *click* <Browse> and change the location. *Click* <Install> to install the software. Then, open the WattMaster USB Driver folder in the temp directory on your hard drive or the new location if you changed the destination folder.

4. *Double-click* on the folder *USBLinkOld-Remote-LinkII-CommLinkIII_IV-Win_Vista-Win_7-OS*.



5. Then *double-click* on the file *USB Driver Setup.exe*.



6. The following window will pop up:



7. *Click* <Begin Install> and the installation program will walk you through the rest of the steps. The program might prompt you to remove old USB drivers from your computer. *Click* <Yes> if so. Once installation is complete, you will need to reboot your computer to have the new settings take effect.
8. With successful USB driver installation, you can now connect your USB device.
9. Follow the procedures on page 2 to verify the Comm Port.

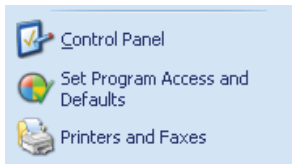
Finding the COM Port Number

Finding What COM Port Number Your USB Device Is Using

1. *Left-click* on <Start>, located on the bottom left of the Windows Tool Bar.



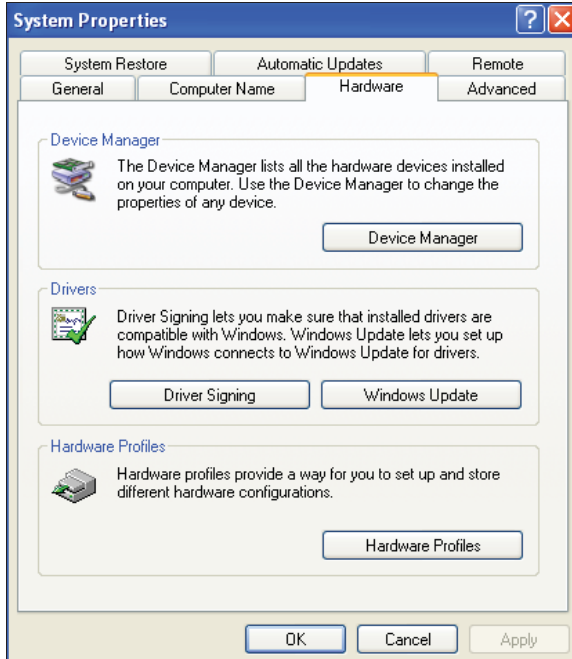
2. *Select* <Control Panel>.



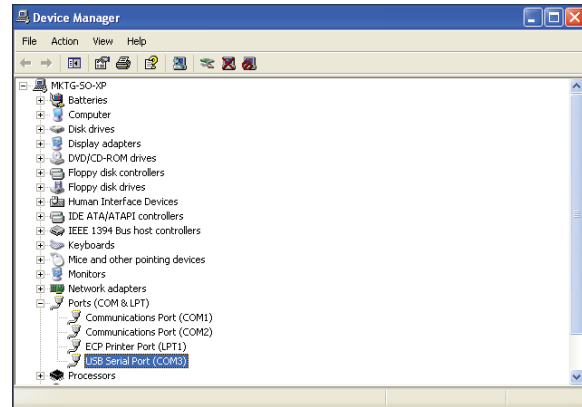
3. *Double-click* the System Icon.



4. *Click* the <Hardware> tab.



5. *Click* the <Device Manager> button.



6. *Click* on the plus sign next to Ports to see all of the common ports.

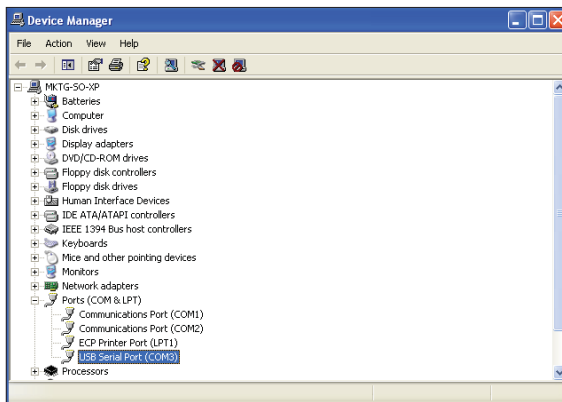
7. *Locate* the USB Serial Port (COM#). The COM# in parentheses is the port it is located on. *Write* this COM port number down. You will need to know this when setting up the Prism software.

8. If the COM port number is 10 or greater, go to "Changing the USB COM Port Number" on page 3.

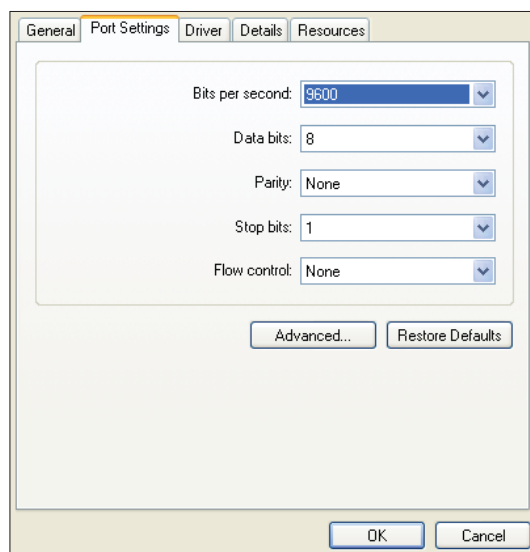
Changing the USB COM Port Number

When your USB device is first plugged in, it will be assigned a COM port number to be used for communicating with the Prism software. If the port number is 10 or greater, it needs to be changed to a value less than 10 to be recognized by Prism.

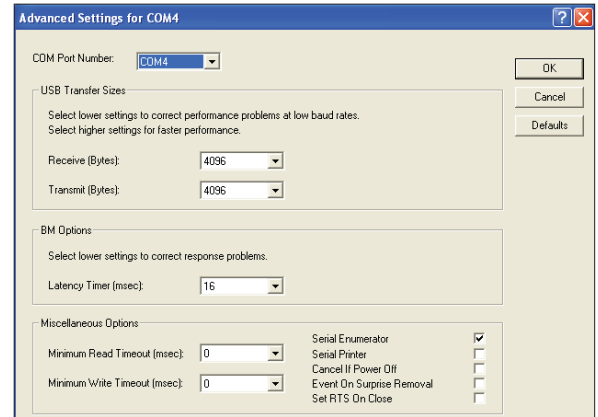
1. Click <Start>, click <Control Panel>, click <System>, click the <Hardware> tab, and then click <Device Manager> to get to the *Device Manager Window*.
2. Click on the plus sign next to Ports to see all of the COM ports.



3. Right-click on “USB Serial Port (COM#)” and select <Properties>. In the *Properties Window*, select the <Port Settings> tab.



4. To assign a port number less than 10, click on <Advanced>. The *Advanced Settings Window* will appear.



5. In the COM Port Number drop box, select which COM port you wish to use. Make sure you select a COM port number that is not currently in use (you can see the ports in use in the *Device Manager Window*). Select a port that is less than 10.

NOTE: Windows® will assign a port number to every device that has ever been installed on your computer. So if there are no available ports below 10, choose a port number less than 10 for a device listed that you know you are not currently using.

6. Once you select the correct COM port number, click <OK> and close any windows opened in the process of changing the port number. Make note of this number because you will need it for your Prism setup.